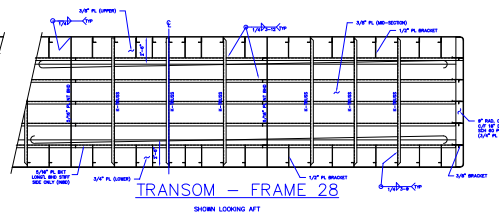
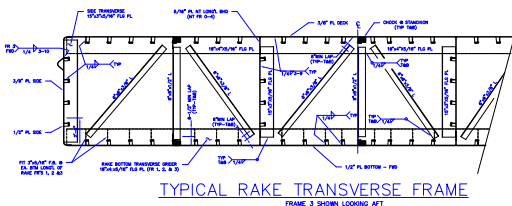
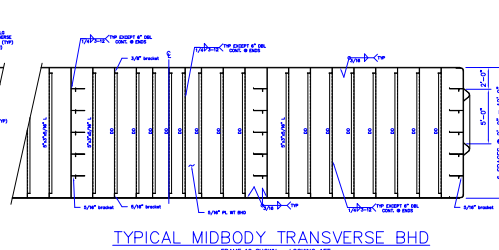
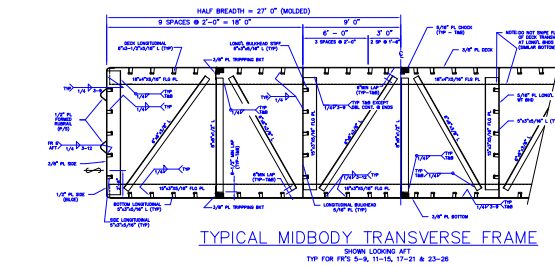
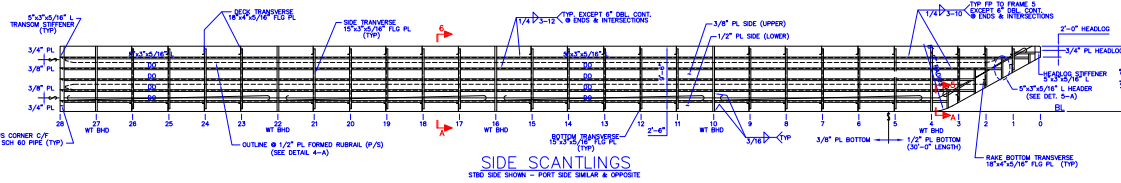
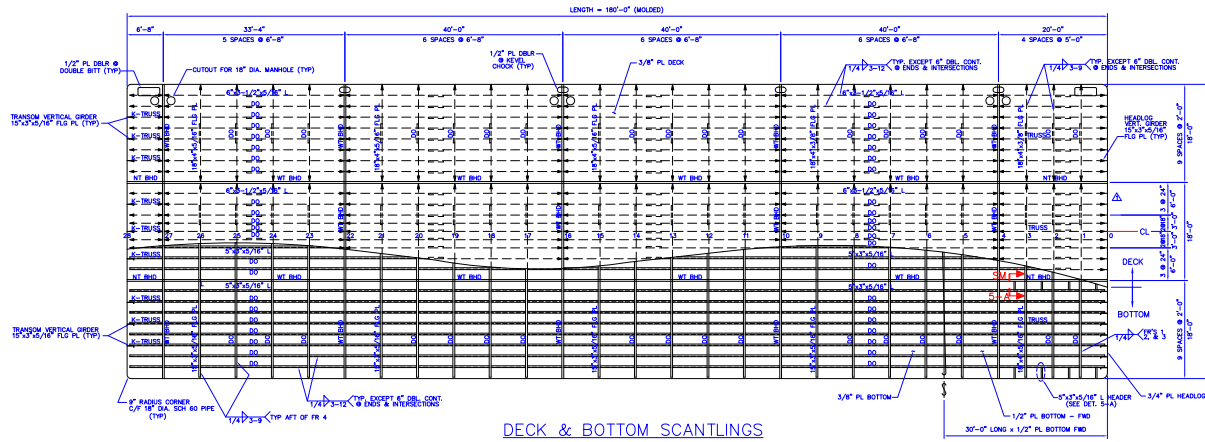


1

2

3

4

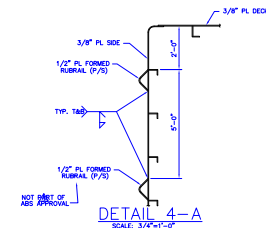
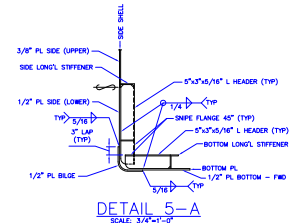
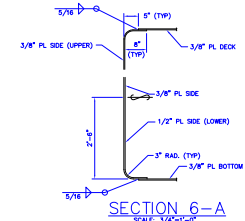


TO CLASS:

TO CLASS: ● A1 BARGE

GENERAL NOTES:

1. DECK DESIGNED FOR MAXIMUM UNIFORM DRY LOAD = 1500 PSF.
2. ALL COMPARTMENTS ARE VOIDS.
3. MATERIALS TO SURVEYOR'S SATISFACTION.
4. FIT-UP & WELDING TO SATISFACTION OF ATTENDING SURVEYOR. Δ



**CANAL BARGE**

Canal Barge Company, Inc.  
835 Union Street  
New Orleans, LA 70112  
Phone 504.581.2424  
[www.canalbarge.com](http://www.canalbarge.com)

180' x 54' x 12' - 0" DECK CARGO BARGE

HULL SCANTLINGS  
CBC 761 & 762

LEGAL NOTICE: General arrangement and other drawings are provided for informational purposes only. Canal Barge Company, Inc. does not warrant the accuracy of any drawing of any barge. By accessing and/or downloading any barge drawing, user agrees to hold harmless Canal Barge Company, Inc. from any claim or loss that may arise from the use of those drawings or any errors or omissions therein.

1

2

3

4